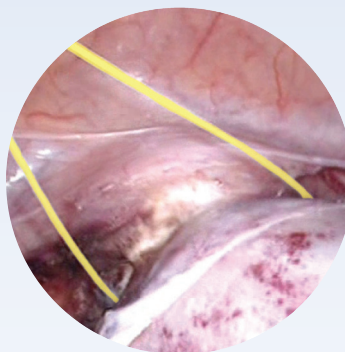




LiNA Gold Loop HC™

*Laparoscopic Supracervical
Hysterectomy and Myomectomy*

- *Sections the uterus in a few seconds!*
- *Hand control eliminates the use of foot pedal*

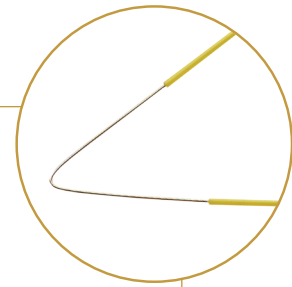


LiNA Gold Loop HC™

safety

Safe and precise sectioning

- Hand control allows the surgeon to have full attention to the procedure
- Leaves the surface clean and coagulated
- Coloured insulation together with the golden loop wire optimize visibility on the monitor



versatility

Minimize procedure time

The LiNA Gold Loop HC is a safe and effective monopolar loop for sectioning of the uterus during Laparoscopic Supracervical Hysterectomy (LSH).

- Clean and effective cut each time

The unique hand controlled LiNA Gold Loop HC is designed to perform uterus sectioning in a few seconds! The monopolar loop performs a safe and precise sectioning of the uterus leaving the cervix with a clean and coagulated surface. A successful result every time.

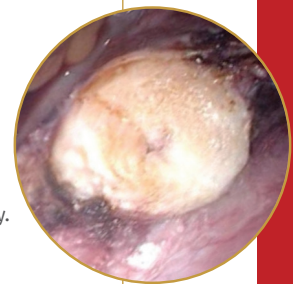
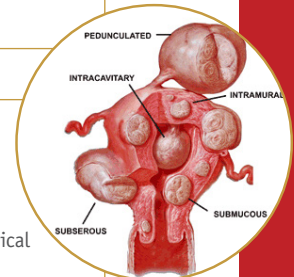
- Cut and coagulation in one simple step

The LiNA Gold Loop HC performs an optimum cut and coagulation during the procedure and thereby eliminates the necessity for post-coagulation of the surface.

- Ready and easy to operate

When the handle is pushed forward the loop opens and is ready for use. The rigid cannula optimizes manoeuvrability.

- No need for foot pedal!



functionality

Unique hand controlled monopolar loop applicable for various sizes of uteri

- 3 loop sizes: small (160mm x 80mm), large (200mm x 100mm) and X-large (240mm x 120mm)
- LiNA Gold Loop HC has a standard 3-pin monopolar plug to fit most electrosurgical units

Ordering Information:

LiNA Gold Loop HC™

REF.	Product	Packing
EL-160-H	LiNA Gold Loop HC™ – 5mm Endoscopic Hand Controlled Monopolar Loop for Laparoscopic Supracervical Hysterectomy and Myomectomy. Dimensions of loop: 160mm x 80mm . With 3 meter cable and 3-pin ESU connector	Box of 6, sterile, single use
EL-200-H	LiNA Gold Loop HC™ – 5mm Endoscopic Hand Controlled Monopolar Loop for Laparoscopic Supracervical Hysterectomy and Myomectomy. Dimensions of loop: 200mm x 100mm . With 3 meter cable and 3-pin ESU connector.	Box of 6, sterile, single use
EL-240-H	LiNA Gold Loop HC™ – 5mm Endoscopic Hand Controlled Monopolar Loop for Laparoscopic Supracervical Hysterectomy and Myomectomy. Dimensions of loop: 240mm x 120mm . With 3 meter cable and 3-pin ESU connector.	Box of 6, sterile, single use

CE marked by

