

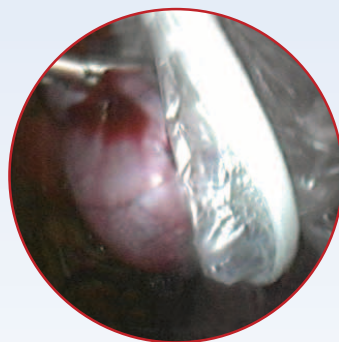


Innovation in Gynaecology

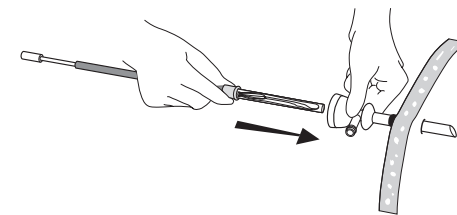


# LiNA EndoBag

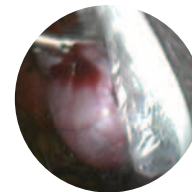
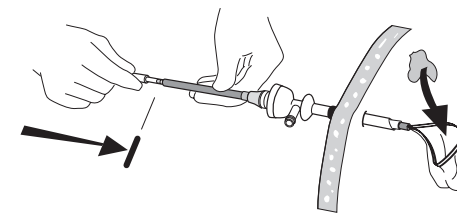
*Specimen Retrieval Bag  
Single use laparoscopic instrument  
for 10, 11 or 12mm trocars*



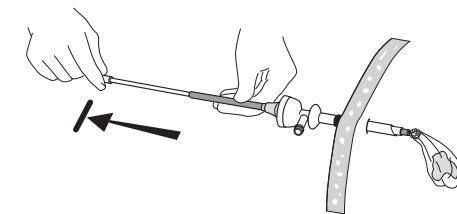
*The LiNA EndoBag is inserted into the abdomen through the trocar cannula. The bag is opened by pushing the transparent handle.*



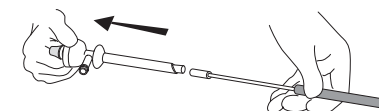
*Specimen is loaded into the bag with a grasper.*



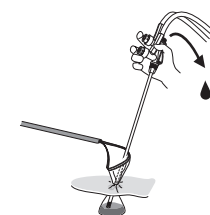
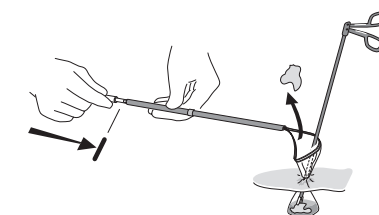
*The bag is closed completely and pulled back as far as possible to the abdomen wall.*



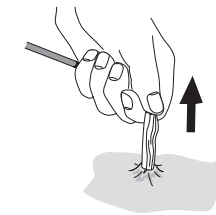
*The Trocar is now removed together with the white protection tube.*



*The bag can be opened "outside" the abdomen, while a part of the pouch is still "inside". Specimen can then be removed with a grasper and liquid with a suction device.*



*The bag can thereafter easily be closed again and pulled out without extra incision of the fascia.*



## Ordering information:

LiNA EndoBag™ **CE 0459**

REF.	Product	Packing
EB-60	<b>LiNA EndoBag</b> – Pouch diameter 60mm x pouch length 125mm = volume 110 mL. For use with 10, 11 or 12mm trocars. Single use.	Box of 10, sterile
EB-100	<b>LiNA EndoBag</b> – Pouch diameter 100mm x pouch length 160mm = volume 410 mL. For use with 10, 11 or 12mm trocars. Single use.	Box of 10, sterile

LiNA Medical ApS

• Formervangen 5  
DK-2600 Glostrup  
Denmark

• Tel.: +45 43 29 66 66  
Fax: +45 43 29 66 99  
info@lina-medical.com

• www.lina-medical.com  
CVR: 10054974



# LiNA EndoBag

The patented LiNA EndoBag is a single use specimen retrieval bag for 10, 11 or 12mm trocars, designed to temporarily contain specimen and facilitate their removal from the patient during laparoscopic surgery.

Due to the risk of contamination of the abdominal cavity when a specimen infected by e.g. malignant tumours is removed, the need for a safe and easy-to-use specimen retrieval bag is growing fast in the minimal invasive surgery. The LiNA EndoBag ensures a good result each time at a cost effective price for the hospital.

## safe

- **Tear resistant – double wall pouch – ensures extra safety**  
The LiNA EndoBag has a double wall pouch, made of a strong tear resistant polyethylene material. If the outer pouch, by accident, is fractured with a sharp needle or an endo-hook during a procedure, the inner pouch remains unharmed and the specimen can be removed without any contamination risk.
- **Impermeable pouch – minimizes risk of contamination of surgical site**  
Due to the double wall pouch, the LiNA EndoBag is impermeable, which means that contaminated specimen cannot pass through the bag. Consequently, the risk of intra abdominal contamination is minimized.
- **No metal content – minimizes risk of electrosurgical burns**  
Furthermore, the absence of metal parts in the LiNA EndoBag minimizes the risk of electrosurgical burns.

## functional

- **Unique flexible plastic ring opens and closes the bag**  
The unique construction and flexible plastic ring to which the bag is attached ensures that the LiNA EndoBag automatically remains open and makes it easy to place the specimen into the bag. The plastic ring can also be used to “scoop” the specimen into the bag without use of graspers. Furthermore, the bag can be opened completely and closed as many times as needed during the procedure.
- **Adjustable bag opening size**  
Due to the construction of the ring, the surgeon can decide how open the bag should be during use. Limited space in the abdomen often requires a small opening. The LiNA EndoBag gives the surgeon full control of the complete procedure.

## versatile

- **Open the bag outside the abdomen**  
The LiNA EndoBag pouch can be opened during the removal phase as opposed to bags that are closed completely by a string. The extra feature enables the surgeon to open up the bag again, while the plastic ring with the top of the pouch is “outside” and the rest of the pouch is still “inside” the abdomen. Remove liquid in the bag with a suction device and remove some of the specimens one by one by using a grasper. The bag with the remaining specimens can then easily be removed from the abdomen by pulling the bag. This feature minimizes the need for making extra incisions in the fascia during the removal phase.
- **Re-use several times for the same patient**  
Due to the unique construction of the LiNA EndoBag, the bag can be reused several times for the same patient e.g. for removal of both ovarian tubes. Simply fold the pouch and cover it carefully again with the white protection tube. The LiNA EndoBag is now ready for use again.
- **Available in 2 sizes – 60 & 100mm diameter**  
The LiNA EndoBag is available in two different pouch sizes. Choose either the EB-60 with 60mm pouch diameter, 125mm pouch length and a total volume of 110ml or the large EB-100 with a 100mm pouch diameter, 160mm pouch length and a total volume of 410ml. With these two sizes most needs in minimal invasive surgery are covered.

*The LiNA EndoBag specimen pouch is ideal for removal of tissue specimens such as:*

- **Gall bladders & stones**
- **Appendices**
- **Ectopic pregnancies**
- **Lymph nodes**
- **Myomas**
- **Ovaries**
- **Lung wedges**
- **Omentum**
- **Sections of bowel**
- **And other similar structures**